

Community Safety Scrutiny Committee

Agenda

Date: Thursday, 25th July, 2013
Time: 10.30 am
Venue: Committee Suite 1,2 & 3, Westfields, Middlewich Road,
Sandbach CW11 1HZ

The agenda is divided into 2 parts. Part 1 is taken in the presence of the public and press. Part 2 items will be considered in the absence of the public and press for the reasons indicated on the agenda and at the foot of each report.

PART 1 – MATTERS TO BE CONSIDERED WITH THE PUBLIC AND PRESS PRESENT

1. **Apologies for Absence**

To receive any apologies for absence

2. **Declarations of Interest**

To provide an opportunity for Members and Officers to declare any disclosable pecuniary and non-pecuniary interests in any item on the agenda.

3. **Whipping Declarations**

To provide an opportunity for Members to declare the existence of a party whip in relation to any item on the agenda.

4. **Minutes of the Meeting Held on 20 June 2013** (Pages 1 - 4)

To approve the minutes as a correct record

For requests for further information

Contact: Katie Smith

Tel: 01270 686465

E-Mail: katie.smith@cheshireeast.gov.uk with any apologies

5. **Public Speaking/Open Session**

A total period of 15 minutes is allocated for members of the public to make a statement(s) on any matter that falls within the remit of the Committee.

Individual members of the public may speak for up to 5 minutes, but the Chairman will decide how the period of time allocated for public speaking will be apportioned, where there are a number of speakers.

Note: In order for officers to undertake any background research, it would be helpful if members of the public contacted the Scrutiny officer listed at the foot of the agenda, at least one working day before the meeting to provide brief details of the matter to be covered.

6. **Road Safety**

To receive an update by the Community and Road Safety Manager, on the education and Fire and Rescue Service elements of road safety.

7. **Cheshire Police and Crime Panel**

To receive a presentation by B Magan, Warrington Borough Council on the work and role of the Police and Crime Panel

8. **Cheshire East Council Crime Prevention** (Pages 5 - 26)

To receive an overview of activities and projects within Cheshire East that reduce crime

9. **Work Programme** (Pages 27 - 32)

To give consideration to the work programme

CHESHIRE EAST COUNCIL

Minutes of a meeting of the **Community Safety Scrutiny Committee**
held on Thursday, 20th June, 2013 at Committee Suite 1, Westfields,
Middlewich Road, Sandbach CW11 1HZ

PRESENT

Councillors M Grant, G Merry, M Parsons, J Saunders and P Hoyland

Councillor P Nurse (Vice-Chairman) arrived during consideration of item 14.

8 APOLOGIES FOR ABSENCE

Apologies for absence were received from Cllr H Murray and A Barratt.

9 APPOINTMENT OF CHAIRMAN

It was agreed that Councillor M Grant be appointed as Chairman for the meeting.

Councillor M Grant took the Chair

10 DECLARATIONS OF INTEREST

There were no declarations of interest

11 WHIPPING DECLARATIONS

There were no declarations of party whip.

12 PUBLIC SPEAKING/OPEN SESSION

There were no members of the public wishing to speak

13 MINUTES OF THE MEETING HELD ON 30 MAY 2013

RESOLVED

That the minutes of the meeting be approved as a correct record and signed by the Chairman.

14 PROBATION SERVICE

The Assistant Chief Executive of Cheshire Probation Trust gave a presentation on the work of the Trust. The presentation outlined:

- The staffing structure
- East Cheshire Organisation Chart
- An outline of the caseload

- Factors contributing to offending
- Community partnership work
- Conviction data/offending rates, pre, during and post nominations

It was highlighted that the Ministry of Justice intended to transform service delivery by introducing a diverse range of providers to drive innovation and achieve efficiencies.

The probation service would retain an important role, approximately 30% of cases, focused on protecting the public by:

- Managing those offenders who pose the highest risk of serious harm to the public, including MAPPA cases
- Continuing to carry out assessments of the risk of serious harm posed by each offender
- Advising the courts and parole board
- Handling most breach cases

The majority of offenders (low and medium risks) would be managed by independent providers, through a 7-10 year contract. There would be 21 contract package areas and Cheshire and Manchester will form one of these, Contracts are likely to be awarded by April 2014.

A national, centrally led commissioning function will be developed that:

- Supported a supply chain
- Avoided undue complexity and duplication; and
- Responsive to local needs.

Providers would be commissioned to deliver community order and licence requirements and would be incentivised to reduce reoffending. Members raised strong concerns that payments would be by results, based on the success of reducing reoffending.

Discussions were ongoing with the Unions with regard to how staff would be TUPE'd over, but some redundancies are likely.

The Assistant Chief Executive was asked to highlight the potential advantages to the proposals and suggested that:

- Offenders with a sentence under 12 months would have supervision.
- IT systems could be improved
- Additional investment and funding for interventions might be likely
- Further career opportunities for staff

It was agreed that progress reports would be brought back to the Committee as implementation progresses

RESOLVED

That further update reports be brought back to the Committee when appropriate.

15 CCTV UPDATE

The Head of Community Services reported that the Surveillance Camera Code of Practice had now been issued and would be circulated to the Committee. It was noted that the Council's response to the consultation had been completed online, Members agreed that the response would be circulated to the Group. Cheshire East Council complied with the 12 points of the code as it was simply a duplication of the framework the Council already operated under. The aim of the code was to bring together all the current legislation within one document. A review to assess whether or not the cameras were fit for purpose was already well underway.

With regard to the possible financial contributions by the Town and Parish Councils it was noted that a service level agreement would be required which would cover:

- Camera availability
- Maintenance/repair and replacement
- Image quality
- Sharing of information
- Camera locations
- Monitoring of cameras.

Members raised questions regarding how the charging tariffs would be applied as it would be unfair to charge small villages the same as larger towns. Also the issue of Macclesfield not having a Town Council would need to be addressed as the Macclesfield Local Service Delivery Committee did not have legal authority to make such a decision.

One Town Council had confirmed that it was happy to contribute financially towards CCTV, the rest had confirmed that they were happy for the review to take place and would discuss financial contributions at a later date. Members raised concerns that the review would not be completed by the September deadline. If the Town and Parish Councils were unwilling to contribute, the cameras would not be actively monitored, repaired or replaced.

With regard to providing cameras at Queens Park, Crewe, it was noted that discussions were currently ongoing and the Chairman of the Friends of Queens Park should be involved.

RESOLVED

1. That the new National Code of Practice for CCTV and the Council's response to the consultation be communicated to Members of the Committee.
2. That the Chairman of the Friends of Queens Park, Crewe be involved in any discussions relating to camera provisions.

16 WORK PROGRAMME

Consideration was given to the work programme. It was agreed that as the Regulatory Service Food Law Enforcement Plan and Budget did not fall within the remit of the Committee, it would be removed from the work programme.

It was agreed that an overview of the Fire Authority's Vision for the future would be received a future meeting of the Committee.

RESOLVED

1. That the Regulatory Service Food Law Enforcement Plan and Budget be removed from the work programme.
2. That an overview of the Fire Authority's Vision for the future would be received a future meeting of the Committee.

The meeting commenced at 10.30 am and concluded at 12.45 pm

Councillor (none)

CHESHIRE EAST COUNCIL**REPORT TO: Community Safety Scrutiny Committee**

Date of Meeting: Thursday 25th July
Report of: Community Safety
Subject/Title: Cheshire East Council Crime Prevention
Portfolio Holder: Cllr L Gilbert

1.0 Report Summary

- 1.1 Overview of activities and projects within Cheshire East that prevent/reduce crime.

2.0 Recommendation

- 2.1 Comment on activities and support funding applications

3.0 Reasons for Recommendation

- 3.1 All activities are conducted with the support of the Safer Cheshire East Partnership and many of the activities are in partnership with other agencies such as Cheshire Constabulary, Cheshire Fire and Rescue Service and Cheshire Probation Trust.

4.0 Wards Affected

- 4.1 All

5.0 Local Ward Members

- 5.1 All

**6.0 Policy Implications including - Climate Change
- Health**

- 6.1
- Economical Climates and partner agency reduction of staff or funding meaning that they can no longer commit to the SCEP's processes as much as they previously had been.
 - New legislation from Home Office with regards to tools and powers to tackle ASB.

7.0 Financial Implications

- 7.1.1 Many of the projects require funding to pay for crime prevention items such as bike marking kits, timer switches and personal alarms. Cheshire Police have

a small budget to pay for items however already, this financial year, all the budget has been used. The Safer Cheshire East Partnership use to receive funding from the Home Office and a small element of this was allocated to the crime prevention fund to pay for such items. Since April 2013, the funding has gone straight to the Police and Crime Commissioner and whilst there is a crime prevention fund, it is much more difficult to obtain the funds now that Cheshire East is competing with bids from the rest of Cheshire.

Cheshire Crime Prevention Panel is a multi agency group of business and statutory agencies and the aim of the group is to prevent crime particularly amongst businesses in the Cheshire East area. The Crime Prevention Panel has a small amount of funding and this also pays for crime prevention items and community engagement projects such as the Brownies crime prevention calendar.

Cheshire Crimestoppers has a small amount of funding to pay for initiatives linked to crime prevention and encouraging people to report crime either to the police or anonymously to Crimestoppers. The Community Safety Team have applied and been successful in obtaining funding for leaflets and also translation costs for non English speaking communities.

Obviously with no clear funding streams for crime prevention and relying heavily on funding bids and small amount of money on an ad hoc basis, it makes it difficult to plan activities or when activities are carried out, at times there is a limited amount of items/resources to hand out. If a small budget was provided to the Community Safety Team, this would enable activities to be planned throughout the year and also, items can be purchased at a much better rate if bought in higher quantities.

8.0 Legal implications (authorised by the Borough Solicitor)

8.1 None

9.0 Risk Management

- 9.1 Risks associated with the work of crime prevention are predominately due to the lack of provision of staff/officer time dedicated to this area of work. Many agencies are reducing their numbers of staff and therefore staff are overstretched with many activities (many of these are dealing with re-active activities as oppose to preventative).
- 9.2 Lack of funding makes it difficult to provide the public with basic crime prevention items/materials which would have a big impact on the likelihood of them becoming a victim of crime.

10.0 Background and Information

Many crime prevention projects and schemes rely on assistance and commitment from partner agencies in order for the process to have the greatest affect and

success. The Cheshire East Council Community Safety Teams' work around tackling crime prevention and reduction is very much embedded within the partnership setting. The Community Safety Team (CST) is based within Cheshire Police stations across Cheshire East, Crewe, Congleton and Macclesfield. The Community Safety Team has full access to Cheshire Police IT systems and databases and therefore the exchange of data and information is very effective. (see appendix 1 for structure chart)

There are many crime prevention projects across Cheshire East and the Community Safety Team lead on a number of these activities such as

- StreetSafe
- SCOOT
- Alleygates/Situational Crime prevention
- Crime prevention community engagement events
- Anti social behaviour warning letter system
- Social media campaign

StreetSafe

StreetSafe is a community engagement and survey project which has been running across Cheshire East since January 2011. The scheme is lead and co-ordinated by the Community Safety Team however it is a multi agency project that focuses on three key objectives

1. Safer
2. Stronger
3. Cleaner

The aim of StreetSafe project is to help the community to put the 'neighbour' back into the neighbourhood and it does this by working with the local residents and listening to the needs of every household within a designated StreetSafe scheme. Identification of the specific streets to be targeted is through the tasking and co-ordination group and analysis of the area is conducted to see what intelligence/data there is for the area. The households are informed one week before the event that a multi agency team will be visiting to discuss safer, stronger and cleaner issues, so that we are not cold calling on the day of the event. The scheme works by pairs visiting every household in the designated area and completing a questionnaire (see appendix 2) with the resident and discussing any issues that they may have. A goody bag is given to everyone that completes a questionnaire detailing key information and contacts about their local area, specific crime prevention advice and also crime prevention items such as timer switches, property marking pens and purse bells. Once the questionnaires have been completed, all the data is collated into a report to identify what the top issues are for the people within that area. (see appendix 3) A short report is hand delivered to every resident in the style of we asked, you said, we did. The StreetSafe project is not about 'fixing' the problems within the community but more of an enabler for the local community to take ownership of their street/neighbourhood.

Some examples of work which has happened as a result of Streetsafe is

- Successful installation of alleygates which was joined funded by a residents committee (set up through the work of StreetSafe) and Cheshire East Council.
- A number of Homewatch schemes have been created and small resident group to bring residents together, to tackle local issues.

To date 15 StreetSafe schemes have taken place over the last 2 years which is the equivalent of over 800 households have been contacted. Of them, 3 StreetSafe schemes have specifically targeted elderly communities and from StreetSafe alone, 86 nominated neighbours have been developed.

Nominated Neighbour Scheme

The Nominated Neighbour Scheme has been developed by Cheshire East Council and Cheshire Police to tackle bogus callers and workmen or other kinds of distraction thefts.

The scheme is aimed at vulnerable people in our community and makes the most of our extremely strong community relationships. Often the bogus workman or criminal will target the elderly or vulnerable and the scheme means that these people will be protected by someone they know and trust, such as a neighbour or a relative.

This scheme will help limit the opportunity for doorstep callers to con there way into homes or persuade residents to have unnecessary home improvements, once they fail to gain access and know the local community is aware of their activities it will act as a strong deterrent to stop them returning in the future.

The Community Safety Team is currently promoting the Nominated Neighbour scheme across Cheshire East and working very closely with Trading Standards and local neighbourhood policing team to ensure that vulnerable people, particularly elderly people within the borough are protected against door step crime.

SCOOT

Stamp Crime Out of Town (SCOOT) is a non-profit making multi agency partnership between the retailers of Crewe & Nantwich, Cheshire Police, Town Centre Management, Chamber of Commerce, Magistrates and the Local Authority to combat town centre crime. The Home Office strongly promotes such long-term, sustainable schemes under the "Crime & Disorder Act" as a means of fighting retail crime, anti-social behaviour, drugs, and fraud.

Shoplifting is a gateway crime, which is why SCOOT works as a deterrent as well as a crime reduction scheme. This initiative is designed to combat retail crime, by the release, under strict guidelines, of a criminal's photograph (targets) and relevant information, with the ultimate aim to exclude persistent, prolific "lifestyle" criminals from all member stores. It also encourages a better working partnership between police and retailers, ensuring that a more focused and targeted response is adopted towards thieves.

The scheme, by coordinated use of CCTV, SCOOT and Radio Link Radios (which all member stores have and the town centre police officers utilise) also improves the general environment of a town by making it a safer, less violent place to be, not only for visitors but also employees who work there

In March of this year SCOOT was audited by the Association of Business Crime Partnerships for the **Safer Business Award**. The Safer Business Award is the nationally recognised standard for business crime reduction partnerships, which shows that they are operating lawfully, in accordance with the Data Protection Act and codes of practice which are specifically designed to promote effective partnership work. The accreditation requires the partnership to evidence partnership management and structure, data protection and data management, key performance indicators and management information and performance.

SCOOT were successful in gaining the Safer Business Award after receiving a pass with distinction.

Alleygates/Situational Crime Prevention

The areas gated in Crewe were selected on the basis of an analysis of crime and disorder figures; and In some instances the areas were also identified in the Indices of Multiple Deprivation as the areas with the worst crime problems in Crewe, being two and three times the borough average.

A survey to determine the appropriateness of gating these alleys was carried out and alternate options considered. The alley ways were assessed as suitable for gating, and this was considered the most efficient, and cost effective intervention.

This project supports the partnership objectives of reducing ASB with a direct link to reducing the fear of crime, as ASB and the perceptions of ASB have a major influence on peoples safety and feelings of safety and wellbeing within their homes. It also links with the reduction of acquisitive crime as alley gates have had an appreciable impact on the instances of rear entry burglaries, and also impacted on vehicle crime in areas of terracing with on-street parking. There are also implications for the reduction of secondary fires (minor arson), criminal damage, graffiti, fly tipping and fouling.

Crime prevention community engagement events

On a regular basis, the Community Safety Team are actively engaging with the local residents in their own communities. This predominately occurs in the form of stalls/stands in locally held community events such a family fun days, whereby members of the team are available to the members of the public to chat about issues relating to crime, disorder and anti social behaviour. Events in which the Community Safety Team have been involved in are

- Cheshire Show
- Nantwich Show
- Cholmondley Pageant of Power

- Ocean fun day (multi-cultural event), Crewe

These events are designed to reach the maximum amount of people giving generic advice about crime prevention and reduction. At these events, we try and give away free crime prevention items such as timer switches, personal alarms and purse bells to name a few.

Other events the Community Safety Team organise is more specific to either a crime type or a season trend. These include

- Bike marking events
- Fresher week in Reaseheath College and MMU Crewe Campus
- Flu clinics (attending GPs surgeries and health centres)
- Halloween and bonfire events

The Community Safety Team also is heavily involved in the promotion of the Homewatch scheme which over the last 12 months there has been a significant rise in the number of co-ordinators and members that have joined. The benefit of this is that we now have a large database of residents contact details and therefore if any information comes into the council or the police that requires help from the public, an email can be sent out immediately and to thousands of people which acts as a two pronged approach in that it informed people of a specific crime or incident and also it provides an opportunity for people provide information/intelligence to the police or council.

An example of where this has had a huge impact was approximately 12 months ago, a prolific offender who was targeting elderly people in relation to door step crime was caught by information that came as a result of an urgent appeal to the Homewatch members database.

Anti social behaviour warning letter systems

The ASB Team has submitted a number of papers to the Scrutiny Board over the past twelve months, most of which have outlined a number of the interventions that have an impact on Crime Prevention across the East of Cheshire.

Below are short descriptions of the main interventions that we use on a regular basis which inevitably have an impact on the prevention of crime. If further detailed descriptions are required, these can be supplied.

Letter warnings:

A selection of different letter warnings regarding Young People involved in ASB acts are sent home to parents, informing them of their child's behaviour. Statistics have evidenced that over 70% of these letters sent do not come to partnership attention again. This early intervention could have an effect on those young people becoming first time entrants to the Youth Offending Service as potential issues are highlighted to parents/guardians at a very early stage

Preventing Offending Panel (POP):

The POP has been running under various different formats and names over the past 10 years. Its main function is to hold two panels a month (North and South of East Cheshire). The POP takes on referrals from a number of agencies for young people and families (up to the age of 18) with reference to those that are at risk of/involved in Anti-Social Behaviour (ASB) and/or offending.

The core duties of the panel are to assign these cases to the appropriate preventative interventions in order to reduce this risk.

Acceptable Behaviour Discussions/Acceptable Behaviour Contracts:

These are voluntary meetings/contracts that are drawn up between the Partnership and a young person/adult which tackles signs of ASB that have the potential to lead to criminal acts should the behaviour continue. Over the years only a very small proportion of young people/adults who have been subject to these discussions/contracts have gone on to offend/be subject to an Anti-Social behaviour order.

Anti-Social Behaviour Community Questionnaires:

These are delivered to households whom have been identified due to reports of ASB in the area. They may well have been subject to this ASB and may not have reported it due to fear of repercussions or not knowing who to report it to. The questionnaire themselves are a good tool for allowing those residents to come forward, to increase visibility in the area when they are being distributed by Police Officers and also to identify possible vulnerable residents who may need further interventions, such as crime prevention assistance, home safety assessments etc.

They also allow us to collect further information with reference to identifying any perpetrators of ASB. The alleged perpetrators also have a copy of this questionnaire delivered to their property, which in itself highlights to them that the Partnership is looking into the case and can assist in them curbing their behaviour before it leads to more criminal acts.

Mediation services (in-house and out-house)

The Partnership ASB team have a number of cases that have been purchased which supply services to those members of the public whom are private rent or private own residents. We are also undergoing the process of training one of our team to become a qualified mediator to assist with some of these cases. These are to deal with neighbour/community disputes that can often lead to criminal offences being reported, such as criminal damage to properties, or assaults due to a feud that has got out of control. Recent studies have shown that Police incident reports to cases whom have been subject to mediation intervention have dramatically reduced calls to the Police and CEC agencies such as Environmental Health, and also potentially prevented criminal acts from taking place.

Crimestoppers:

All the literature that we send to local residents via community questionnaires etc, do have included with them information with reference to Crimestoppers, we are in hope that this could also assist with Crime Prevention by highlighting anonymous reporting to residents in an area that might be subject to a high level of ASB/Crime.

Social media campaigns

The use of the internet has made the messages of crime prevention much easier to reach a wider community. The Community Safety Team has dedicated web pages on crime prevention and how to keep safe.

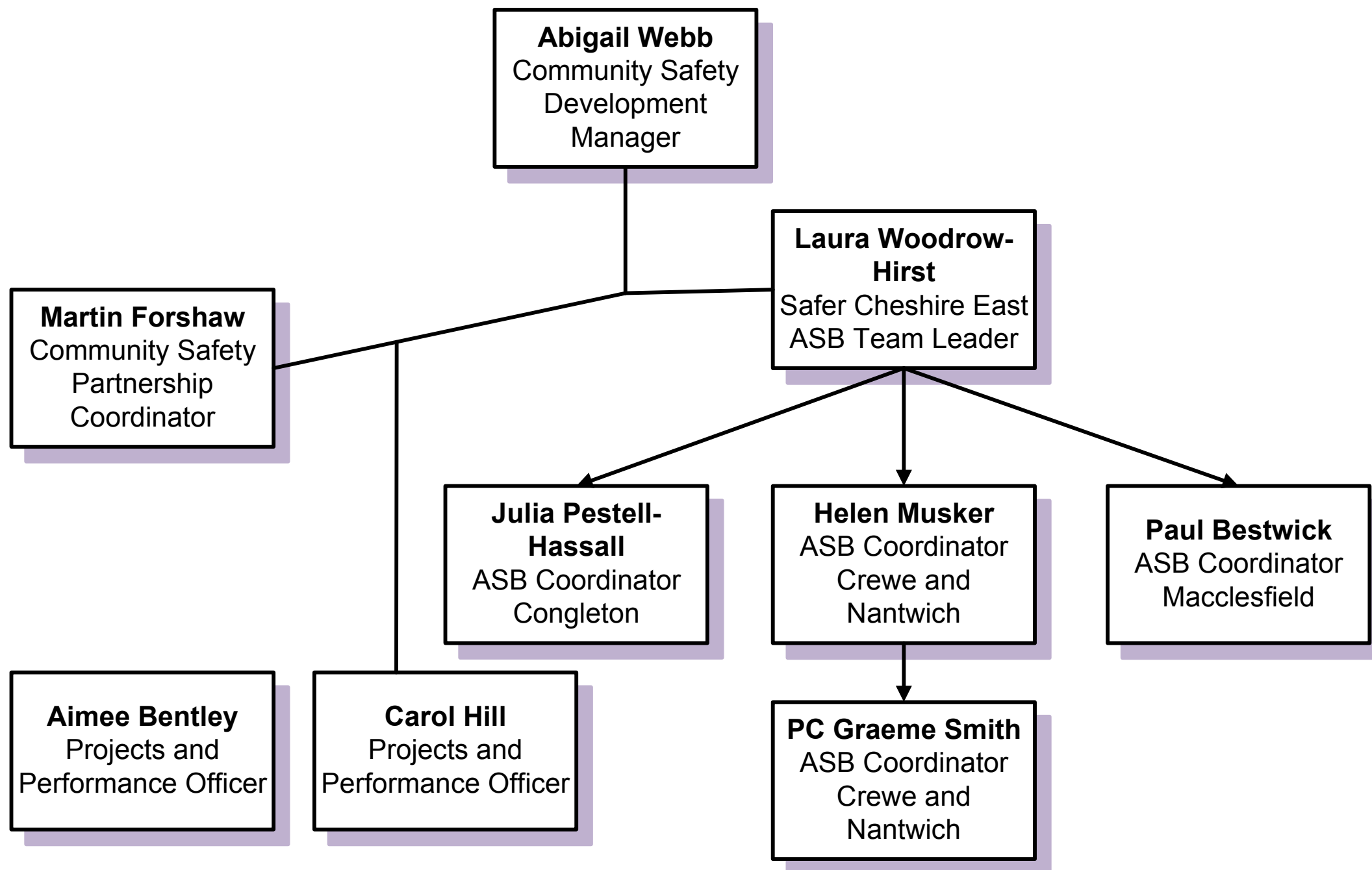
Other forms of social media used by the Community Safety Team is twitter and this has proven to be a good way of engaging with the local community. At a recent crime prevention event in Nantwich, a tweet was sent out in the morning to inform people of the details of the event. During the event, every person who presented themselves at the stand was asked how they knew about the event and over a third of people stated that they specifically came to the event because they had seen the tweet.

The Safer Cheshire East Partnership twitter account is @safercheshire

11.0 Access to Information

The background papers relating to this report can be inspected by contacting the report writer:

Abigail Webb
Community Safety Development Manager
01606 363352
Abigail.webb@cheshireeast.gov.uk



This page is intentionally left blank

House Number: _____
Officials attending:.....

SAFER

Does your home have a smoke alarm fitted? Yes ☐ No ☐

If yes, does the alarm work (*action: check by official person & advise owner to check weekly*) Yes ☐ No ☐

If no, would you like a smoke alarm fitted **free of charge**? Yes ☐ No ☐

Would you like the Fire Service to visit your home to conduct a free home safety assessment? Yes ☐ No ☐

Are you involved in Neighbourhood Watch? (***there is not one currently set up in the area***) Yes ☐ No ☐

If no, would you be interested in learning more about setting up this type of group? Yes ☐ No ☐

Would you join this type of group if one was set up in the area? Yes ☐ No ☐

Are you aware of The Gresty Community Group? Yes ☐ No ☐

If there was a weekly drop-in/information surgery for the neighbourhood at the YMCA would you use it?

Yes ☐ No ☐

If no, any comments

.....

What do you expect from a Community Group?

.....

Do you feel safe going out during the day? Yes ☐ No ☐ NA ☐

.....

Do you feel safe going out at night? Yes ☐ No ☐ NA ☐

.....

Do you feel safe in your home? Yes ☐ No ☐ NA ☐

.....

Have you or are you considering moving from the area? Yes ☐ No ☐

If yes, can I ask why?

.....

STRONGER

What do you consider the best thing about living in this area?

.....

.....

.....

What do you consider to be your number one community problem?

.....

.....

COLD CALLING

Experience of Cold Callers (people you don't know calling at your home without an appointment)

In the last 6 months, how often have cold callers been to your door?

Regularly (more than once a week) ☐

Sometimes (at least once a month) ☐

Occasionally (less than once a month) ☐

Never ☐

What kind of cold callers have you had in the last 6 months?

Property repairer's ☐

Sales people ☐

Charity collector's ☐

Other.....

How confident do you feel in managing callers at your door?

Very confident ☐

Fairly confident ☐

Not very confident ☐

Not at all confident ☐

Would you like to receive more information on a No Cold Calling Sticker or the Nominated Neighbour Scheme?
(pack can either be left or sent to the resident)

Yes ☐ No ☐

ANTI SOCIAL BEHAVIOUR

Are there any particular problems in your area relating to ASB? For example, noise nuisance, small fires, neighbour disputes, alcohol, young people or adults causing trouble passing through your Neighbourhood or living in your Neighbourhood?

Yes ☐ No ☐

If yes, please give details:

.....

.....

.....

Have you reported ASB before?

Yes ☐ No ☐

If Yes, to whom?

.....

If yes, where you satisfied with the outcome?

Yes ☐ No ☐

If yes, would you like someone to contact you regarding support available?

Yes ☐ No ☐

Is there an underage alcohol problem in the area?

Yes ☐ No ☐

If yes please give details:

.....

.....

Are you aware of the Community Alcohol Partnership (CAP) set up in Crewe South?

Yes ☐ No ☐

What do you expect from the CAP?

.....

.....

Are there any problems in your local community relating to drugs?

Yes ☐ No ☐

If yes, could you provide details?

.....

.....

.....

CLEANER

Are there any problems in your area in relation to litter or fly tipping?

Yes ☐ No ☐

If yes, please give details:

.....

.....

.....

Are there any problems in your area in relation to graffiti?

Yes ☐ No ☐

If yes, please give details:

.....

.....

.....

Are there any problems in your area in relation to animal fouling?

Yes ☐ No ☐

If yes, please give details:

.....

.....

.....

Do you recycle?

Yes ☐ No ☐

If no, what assistance could we provide to encourage you to recycle?

.....

.....

Which of these recycling containers do you regularly use on the kerbside recycling collection scheme?

Silver (recycling) ☐

Black (general) ☐

Green/Brown (garden waste) ☐



RESIDENT'S DETAILS:

Name:

Gender: Male ☐ Female ☐

Address:
.....
.....

Post code:

Telephone No:

Email address:

How many adults live in the property?

Ages:.....

How many children live in the property?

Ages:

Is your property:

Privately owned ☐ Private rented ☐ Wulvern/Council ☐

Landlord details *if applicable*:
.....
.....

How long have you lived at this property?.....

This page is intentionally left blank

EVALUATION REPORT FOR HAMMOND STREET, CREWE

STREETS SAFE VISIT UNDERTAKEN ON 24TH APRIL 2013.

INTRODUCTION

On 24th April 2013, 7 pairs, made up of representatives from Cheshire Police, Safer Cheshire East Partnership, Cheshire East Borough Council, and volunteers visited 28 properties on Hammond Street, Crewe.



AIM

To engage with residents in relation to three community themes:-

- Safer
- Stronger
- Cleaner

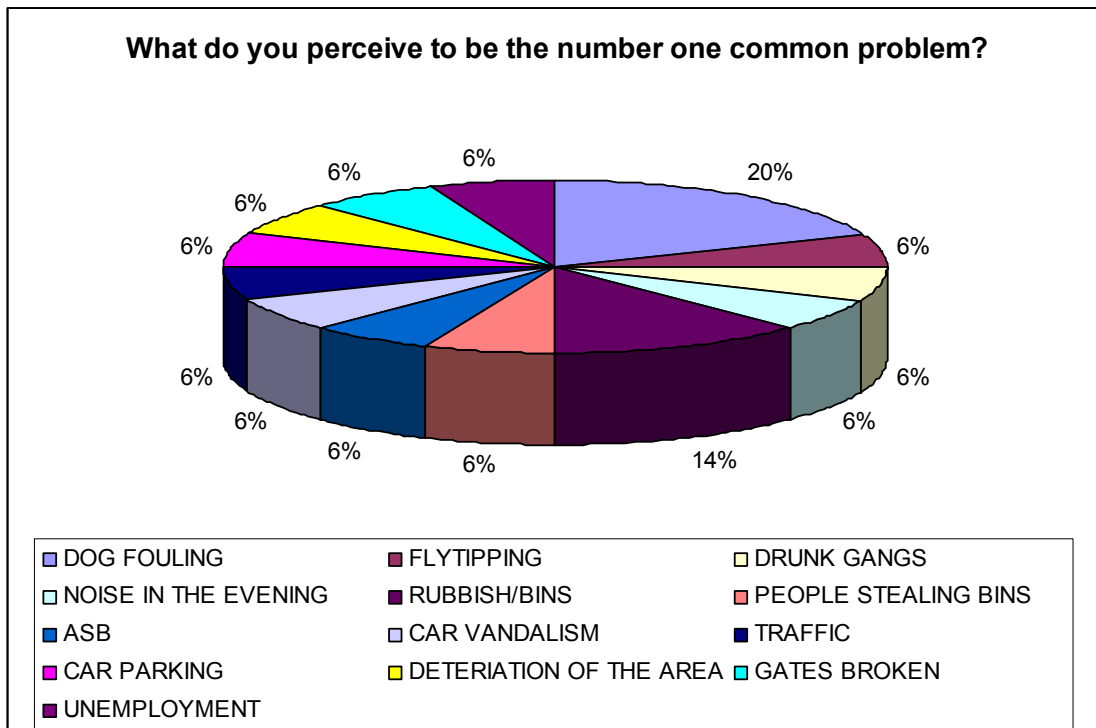
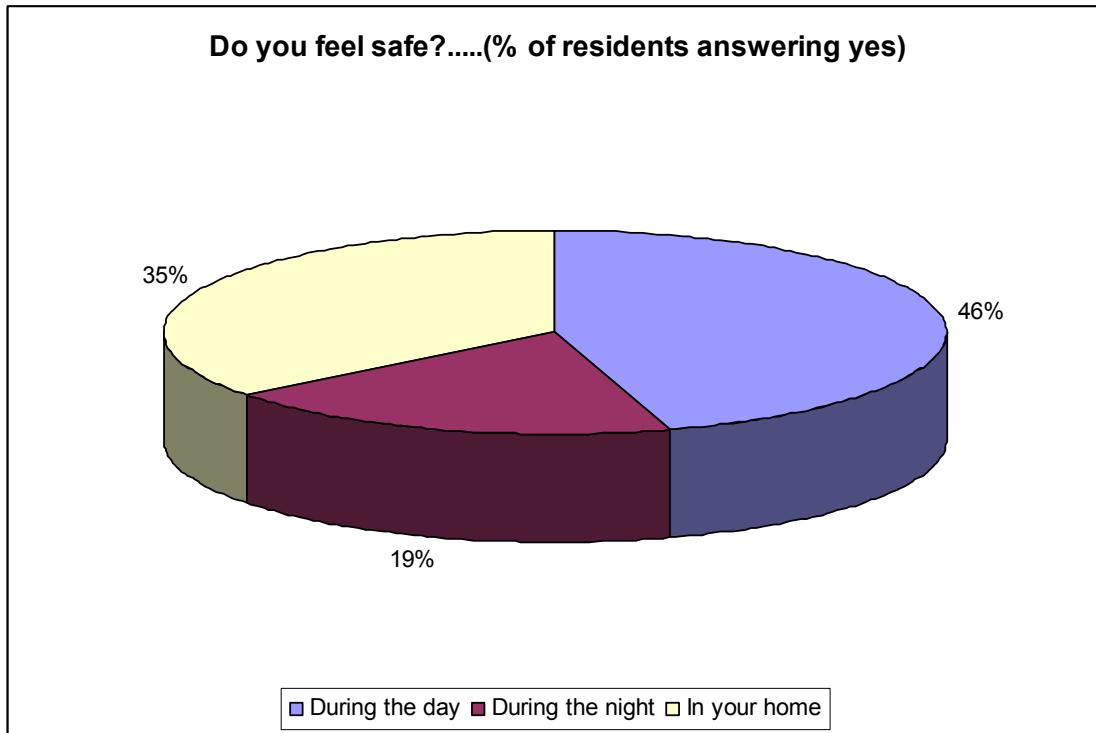
We asked the residents of Hammond Street specific questions in relation to their local neighbourhood. We spoke to 16 householders (57%).

A summary of findings is as follows:

SAFER

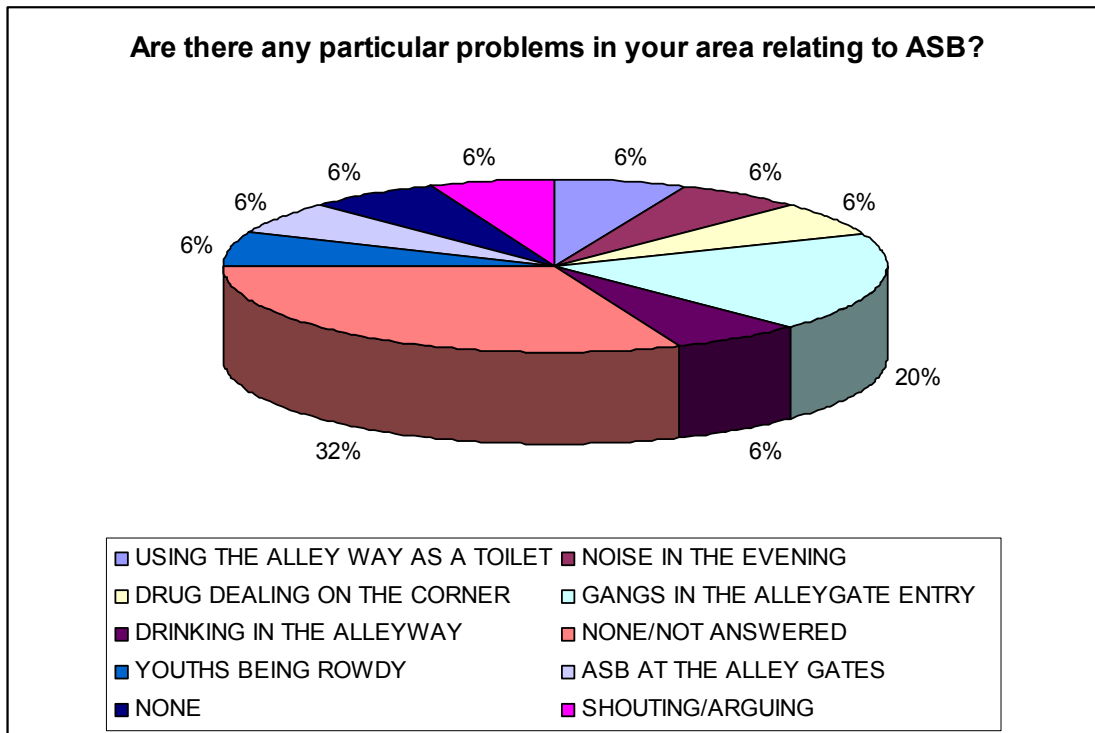
- 88% of residents had a smoke alarm fitted in their property.
- 19% of householders requested a Home Safety Assessment be carried out
- 31% of residents expressed an interest in setting up a Home Watch scheme
- 38% of residents expressed an interest in joining a Home Watch scheme

STRONGER



Top reported problems within the area were:-

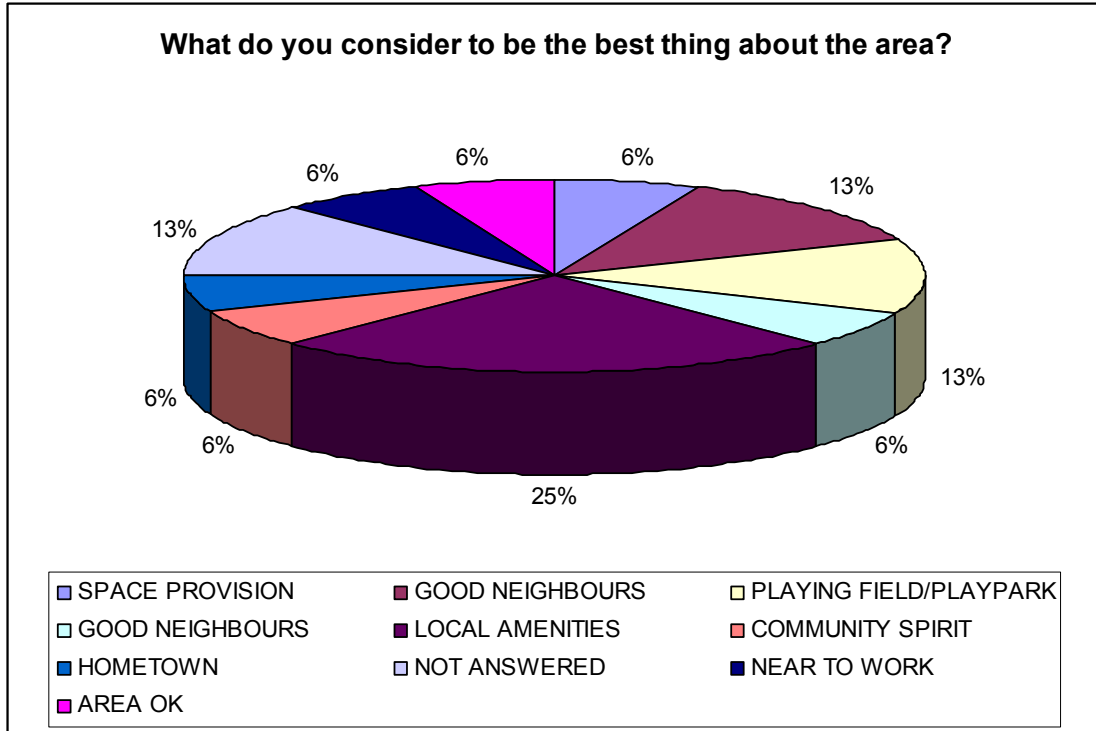
- 32% of residents reported that there were no problems/not answered the question as to be the number one common problem.
- 20% of residents reported gangs in the alley gate entry to be the number one common problem.



The top reported ASB issues in the area were reported to be no issues/not answered (at 32%) and Gangs in the alleygate entry (at 20%).

Any particular identified individuals causing anti-social behaviour should be reported to the Anti-Social Behaviour Team, on email: safer@cheshireeast.gov.uk or telephone 0300 123 5030.

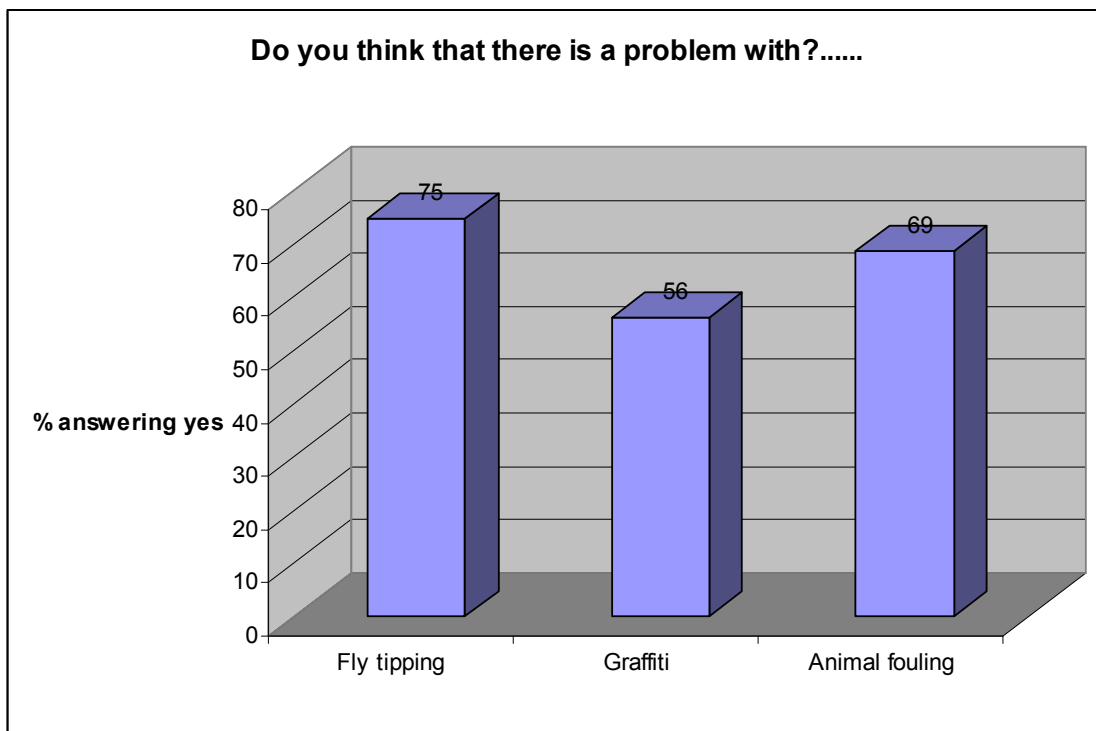
Residents were asked their views on the positive aspects of living in the locality.



25% of residents thought that being close to the local amenities was the best thing about living in the area. Equally, the playing field/play park, good neighbours and question not answered was answered by 13% of residents as being the best thing about living in the area.

CLEANER

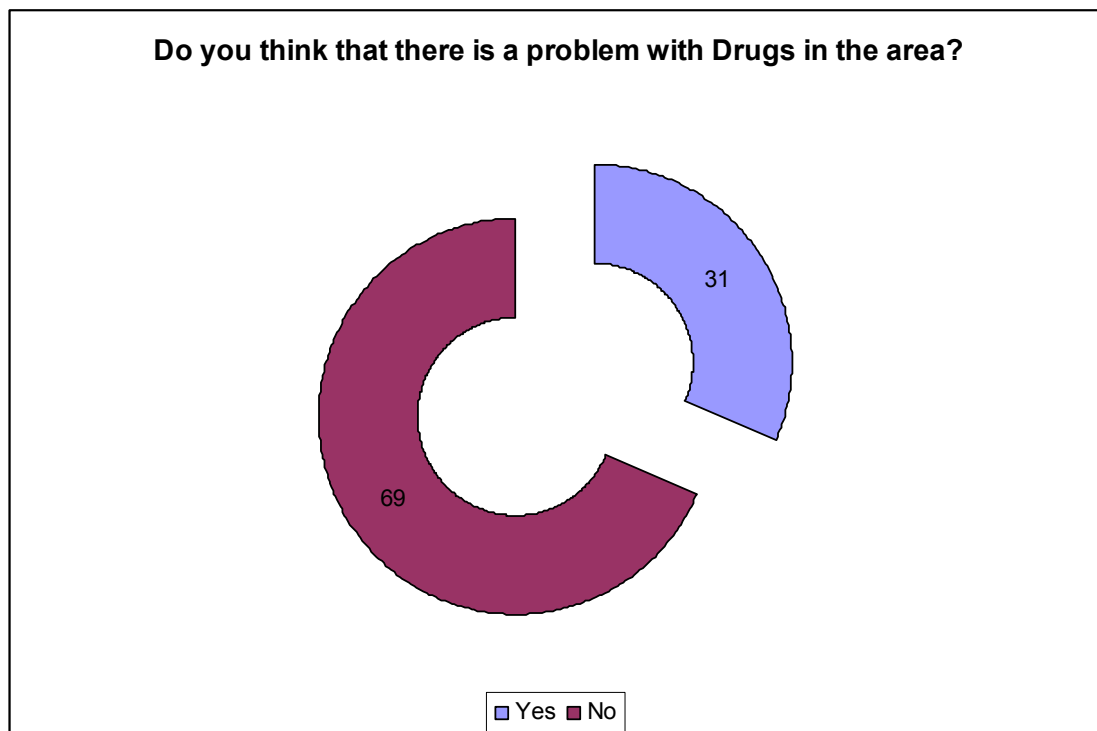
Residents were asked whether they felt there were problems with litter/fly tipping, graffiti and animal fouling in the area. Results are shown below.



- 75% of respondents believed there was a problem with litter/fly tipping
- 69% of respondents felt animal fouling was a problem
- 56% were concerned about graffiti



To nominate your area for a community payback clean-up project, please contact 01244 655100 or visit www.cheshireprobation.org.uk



ACTIONS

- Fire Service Home Safety Assessments to be carried out in properties that have requested it.
- Cheshire East Borough Council's Streetscape department has been given details of fly tipping, graffiti etc and are currently investigating the problem areas.
- Cheshire East Borough Council's Waste and Recycling department to replace missing recycling/refuse receptacles.
- Cheshire East Borough Council's Community Safety Department to make contact with residents who requested information regarding Anti-Social Behaviour.
- Cheshire East Community Wardens to run an anti-dog fouling campaign in the area.
- Cheshire Police Home Watch Coordinator to make contact with residents interested in setting up/joining a local Home Watch Scheme.
- Cheshire Police Crime Reduction Advisor to make contact with residents who are concerned about safety within their homes.

If you would like any further information or have any questions regarding the StreetSafe initiative scheme, please do not hesitate to contact The Safer Cheshire East Partnership at safer@cheshireeast.gov.uk or telephone 0300 123 5030.

CHESHIRE EAST COUNCIL

REPORT TO: COMMUNITY SAFETY SCRUTINY COMMITTEE

Date of Meeting:	25 July 2013
Report of:	Interim Borough Solicitor
Subject/Title:	Work Programme update

1.0 Report Summary

- 1.1 To review items in the Work Programme listed in the schedule attached, together with any other items suggested by Committee Members.

2.0 Recommendations

That the work programme be reviewed.

3.0 Reasons for Recommendations

- 3.1 It is good practice to agree and review the Work Programme to enable effective management of the Committee's business.

4.0 Wards Affected

- 4.1 All

5.0 Local Ward Members

- 5.1 Not applicable.

6.0 Policy Implications including - Carbon reduction - Health

- 6.1 Not known at this stage.

7.0 Financial Implications

- 7.1 Not known at this stage.

8.0 Legal Implications

- 8.1 None.

9.0 Risk Management

- 9.1 There are no identifiable risks.

10.0 Background and Options

- 10.1 The schedule attached has been updated to reflect the decisions taken by the Committee at its previous meeting.
- 10.2 Members are asked to review the schedule attached to this report, and if appropriate, add new items or delete items that no longer require any scrutiny activity. When selecting potential topics, Members should have regard to the Council's new three year plan and also to the general criteria listed below, which should be applied to all potential items when considering whether any Scrutiny activity is appropriate.

The following questions should be asked in respect of each potential work programme item:

- Does the issue fall within a corporate priority;
 - Is the issue of key interest to the public;
 - Does the matter relate to a poor or declining performing service for which there is no obvious explanation;
 - Is there a pattern of budgetary overspends;
 - Is it a matter raised by external audit management letters and or audit reports?
 - Is there a high level of dissatisfaction with the service;
- 10.3 If during the assessment process any of the following emerge, then the topic should be rejected:
- The topic is already being addressed elsewhere
 - The matter is subjudice
 - Scrutiny cannot add value or is unlikely to be able to conclude an investigation within the specified timescale

11 Access to Information

The background papers relating to this report can be inspected by contacting the report writer

Name: Katie Smith
Designation: Scrutiny Officer
Tel No: 01270 686465
Email: katie.smith@cheshireeast.gov.uk

Community Safety Scrutiny Committee Work Programme – Last Updated (15 July 2013)

Future Meetings

Date: 20/06/2013 Time : 10.30am Venue: Committee Suite, Westfields	Date: 25/07/2013 Time: 10.30am Venue: Committee Suite, Westfields	Date: 19/09/2013 Time: 10.30am Venue: Committee Suite, Westfields	Date: 24/10/2013 Time: 10.30am Venue: Committee Suite, Westfields
--	---	---	---

Item	Notes	Lead Officer/ Portfolio Holder	Action to be Taken	Key Dates/Deadlines
CCTV Review Update	Scrutinise the outcomes of the review	P Hartwell L Gilbert	Scrutiny Committee	TBA
Probation Service	To receive an update presentation on the changes to the Probation service	Cllr L Gilbert S Link	Presentation at Scrutiny Committee	TBA
Crime Prevention	What is Cheshire East doing with regard to crime Prevention. Future Plans/Budget	Cllr L Gilbert A Webb	Scrutiny Committee To outline the Local Authority's role as lead organisation for Crime	25 July 2013
Police and Crime Panel	To receive a briefing on the role of the PCP and its recent work	L Gilbert B Magan	Scrutiny Committee	25 July 2013
Road Safety	What is the Fire Authority doing to improve Road Safety. Future plans/budget.	Fire Authority Cllr L Gilbert M Dowel	Scrutiny Committee To outline the Fire Authority's role as lead organisation for Road safety	19 September 2013

Community Safety Scrutiny Committee Work Programme – Last Updated (15 July 2013)

Domestic Abuse and Vulnerable People	What is Cheshire East doing with regard to domestic abuse. Future Plans/Budget	Cllr L Gilbert J Gibson	Scrutiny Committee To outline the Adult Social Cares role as lead service for Domestic Abuse and Vulnerable People	19 September 2013
Vision for the Fire Authority	To receive a presentation on the proposed changes to the Fire Authority	Cllr L Gilbert Richard Ost, Assistant Chief Fire Officer	Presentation at Committee	24 October 2013
Road Safety Routes Review	To scrutinise the outcome of the Road Safety Routes Review once completed.	K Melling	Scrutiny Committee	21 November 2013
Anti Social Behaviour	What is Cheshire East doing to address anti social behaviour. Future plans/budget	Cllr L Gilbert L Woodrow-Hurst	Scrutiny Committee To outline the Local Authority's role as lead organisation for Anti Social behaviour	TBA
Flood Risk Management	The Flood & Water Management Act 2010 made amendment to the Local Government Act 2000, under Section 21F, requiring all Lead Local Flood Authorities to review and scrutinise the actions of Flood Risk Management Authorities that may affect the local	K Melling	Scrutiny Committee	TBA

Community Safety Scrutiny Committee Work Programme – Last Updated (15 July 2013)

	authority's area. *			
--	---------------------	--	--	--

*Under the Flood and Water Management Act 2010 and its associated Regulations; the European Union Flood Directive 2009 together with associated Regulations; Cheshire East Council is statutorily required as the lead local flood authority to meet certain requirements in relation to Flood and Water Management. Moreover, following the Pitt Review the Council is expected to meet certain expectations. Under the Regulations and the expectations of the Pitt Review it is intended that the Council's scrutiny procedure should review work by public sector bodies and essential service providers in order to manage flood risk. Also, that there should be an annual summary of actions taken locally to manage flood risk in order to meet the regulations and to implement the appropriate recommendations of the Pitt Review.

Items completed for Monitoring or update

Item	Date Completed	Status	Lead Officer	Possible Future Action

This page is intentionally left blank